

Welcome to My Sim Aquarium!

My Sim Aquarium is a virtual aquarium game designed for users of all ages who love fish and aquatic creatures. The makers of this game have created a virtual environment for your fish to live in with you as their keeper. As with a real aquarium, you will be able to enjoy their beauty but you will also have to take care of them.



Table of Contents

System Requirements	2
Installation	2
Starting the Game	3
What it's all about	5
Game Menus	6
Marine Pet Shop	10
Encyclopedia	13
Decorating your Aquarium	15
In-Game Options	19
Credits	20
Hot key List	21
Support	22

System Requirements

Computer

- *CPU: Pentium 233 MHz or better processor.
- *System Memory: At least 64Mb of RAM.
- *Video 3D accelerator card with at least 8MB of video RAM and compatible with DirectX®7.0 or higher.
- *Sound: 16-bit sound card compatible with DirectSound®. Some sound cards may require updating their drivers.
- *CD-ROM Drive: At least 4Xspeed CD-ROM Drive.
- *Hard Drive: Minimum of 125MB of disk space available

Operating System

You must have Windows®95, 98, ME, 2000, or XP in order to play My Aquarium on your system. Your system must also have DirectX®7.0 or higher installed. (DirectX®7.0 is included on the Install Disc).

PLEASE NOTE

- 1. We applied DirectX 7.0 technology as the backbone structure while creating My Sim Aquarium with enhanced graphic features. If your 3D accelerator card has old or outdated device drivers that does not support DirectX 7.0 or above, you should contact your video card manufacturer for information on obtaining the latest drivers.*
- 2. VR Aquarium is a real-time 3D game offering a number of high quality three-dimensional models. Their quantity in your aquarium may affect the graphics performance on your computer. If experience a lagging problem, you can go to the Decorate Menu to remove a few decorating items or release some of the overpopulated tropical fish in the Marine Pet Shop. Selecting a lower video resolution (640*480) from the Options Menu may also do the trick.*

Installation of My Sim Aquarium

Insert the My Sim Aquarium Install Disc into your CD-ROM drive. If your computer is Auto Play capable, the installation procedure will automatically activate on its own. If AutoPlay is disabled or for any reason, is unable to display the Installer Menu on the screen, browse the CD-ROM root directory to execute AUTORUN.EXE. The Installer allows three types of installation. The typical install puts the entire game on your hard drive. It takes up approximately 230MB of disk space. Although this installation takes up the most room, it offers the best performance. The Compact Install puts the most commonly used elements and minimum music files on your hard drive and takes up approximately 135MB of disk space. The Custom Install allows you to select optional elements, including 165MB of music files. Follow the on-screen instructions to complete installation.

PLEASE NOTE: *If you choose compact install, the installer will offer the full features of the game with a few sound tracks. Once the program is installed, you can select other*

desired sound tracks from either the Install Disc or the third party source into the game directory (only supports 16bit 22 kHz WAVE file). To do so, please ensure the location of the file path

(default path : C:\Program Files\Formosoft\VR Aquarium International). Copy the sound files into its subdirectory: data\music.

Default Path:

C:\Program Files\Formosoft\VR Aquarium International\data\music

Designate Path: (ie: D:\Games\VR Aquarium)

D:\Games\VR Aquarium International\Data\Music

Starting the Game

The Installer creates a short cut on the desktop. Simply double click the icon to start the game. From the start menu, click on programs, choose Viva Media and click on My Sim Aquarium.

If there is more than one 3D accelerator on your system and you wish to choose another card to play the game, go to the start menu and choose 3D Setup from the My Sim Aquarium subdirectory.

Once you have launched My Sim Aquarium, the Main Menu will appear. From here, you can click on any of the animated icons to get into them. Please refer to the following instructions for quick start.

Step1: Setup Aquarium

Left click your mouse on the crane icon to enter the Fish Tank Editor.


Step2:

Use the right mouse button to close editor menu.



Right click your mouse to exit and go back to the main menu

Step3:

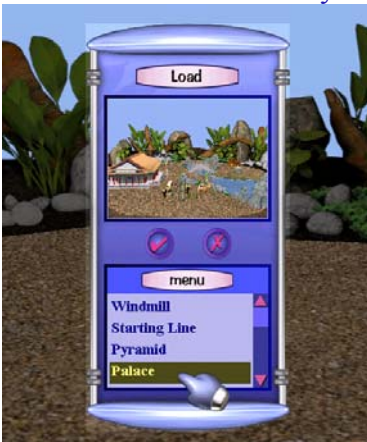
Click on the seashell icon  at the upper left corner to pop up the file manager menu.




Click the mouse for loading the existing tanks

Step4:

The menu screen allows you to view the screenshot of the existing tanks.



Click the mouse for loading preexisting tanks or to scroll up or down the menu bar

- ♥ When the preference is selected, click on  to load the scene.
- ♥ The [X] will take you back to main menu.

Step5: Select the tropical fish for your aquarium by clicking on the Marine Pet Shop icon.

Step6:

The in store aquarium on the right supplies various fishes for you to bring home. If you want to check the purchased fish, click on the smaller tank on the left. You can see their status posted on the board above.


- ♥ You can view all species by scrolling up or down with these two arrow icons.
- ♥ We suggest that you only pick 5 to 8 fish for the first time.
- ♥ Please note that the quantity of each species supplied is limited.
- ♥ Use the sea shell at the bottom left corner to return to the main menu

Step7: Get Into My Aquarium

From the main menu, enter your aquarium by clicking on the fish tank in the center.

Step8: Care for Your Fish



Click  to check the fish status

Click  to open the food menu

♥ Use the left mouse button to shake out the food

♥ Please refer to the user manual for more information on the functionalities of the Fish Helper.

What it's all about

Fish Keeping

The emphasis of designing My Sim Aquarium is to create a relaxing atmosphere filled with astonishing virtual images for everyone in the family to enjoy. We provide you the virtual aquarium to setup, design, decorate plus you can choose your own aquatic pets from a variety of more than forty-five species. They will grow up and breed under your watchful eye. You will watch as your fry (baby fish) forms a shoal and eventually grows into a mature fish that will swim toward you for food.

Fish Care

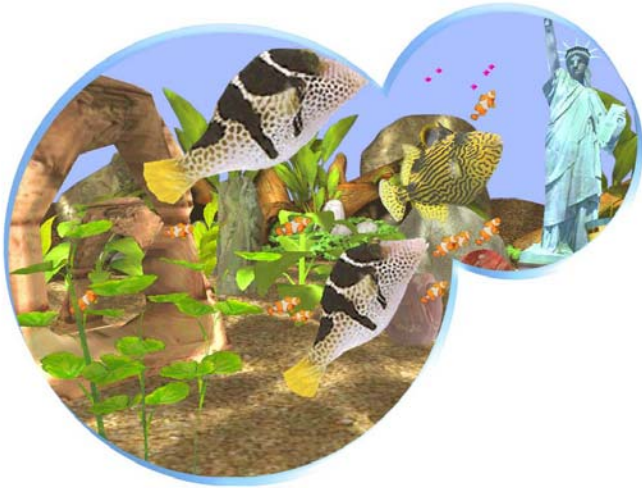
Although we have simplified the many aspects of real-life fish keeping, your fish still need a great deal of your attention. You are required to take care of feeding them and changing their water. But don't worry, you can do it all with just a click. When tropical fish suffer, it is usually from hunger or polluted water. These life-threatening causes are due to the fish droppings and rotten food in the tank. Using professional mode, fishes may not last for more than two days. However, the actual time length varies depending on their constitution and the population of the occupants.

Raising Fish

You can always go to the Marine Pet Shop to purchase new fish, or sell your fish back to the store. All your new pets purchased from the shop start off as fries. They can grow up to three times their usual fry size.

Fish Breeding


If you have taken good care of your fishes, they may be able to breed as soon as they reach maturity. Due to the limited quantity available of each species sold in the shop, breeding is the only way for you to obtain more fish, (than is provided.)



Main Menu

The main menu presents you with these options: My Aquarium, Marine Pet Shop, Decorate Aquarium, Encyclopedia, Game Options, Credit, and Exit. Select them by left-clicking the corresponding icons.

Look for a seashell

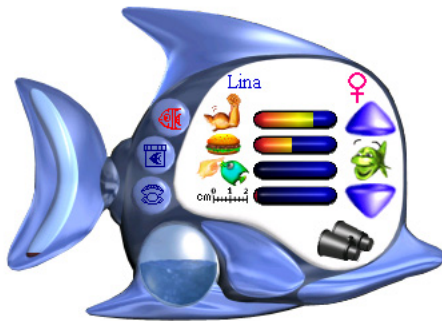
Most of the in-game screens have a seashell icon, , for you to click back to the Main Menu, except for in My Aquarium where you exit from the Fish Helper instead.

This is where you can relax and watch your fish swim through the seaweed and anemones. You can move the cursor to the edge of your screen to rotate the point of view. You may even zoom in and out by pressing the [Page Up] and [Page Down] keys respectively.



Fish Helper

When you enter My Sim Aquarium, you may have already noticed the bluish fish-like panel floating on the screen. All the maintenance tools you are there. Feeding and water changing can also be done there. There are four main buttons located beside the main panel of the Fish Helper. They are "**Fish Info**", "**Fish Diet**", "**Changing Water**" and "**Main Menu**". The main panel will assist you in executing each of them. The curved bar on the Fish Helper's tail indicates the water condition of your tank. When the level reaches above the third quarter, the water has become toxic for fish.



Buttons on Fish Helper



Fish Info

You can click on this button to access functions for managing your fish.

Fish Status

There are four colored bars indicating the status of in the aquarium fish. You can identify your fish by their nicknames shown above the bars. The icon to the right of the nickname shows their gender (♀: female, ♂: male). The facial icon between the up/down arrows indicates if the fish is happy or not.

HELPFUL HINTS:

Left Clicking means using the left mouse button to perform a certain task, whereas Right-Clicking means to cancel or return to the previous menu.

You may right-click any place of the window to hide the Fish Helper.

The hand cursor will automatically hide itself if the keyboard and mouse has been left to idle for a while.

You can hold down the left mouse button to drag around the Fish Helper. If the cursor is on top of the button, there will be a bubble hint indicating its functionality.

Since we have made this game to help broaden awareness for fish in nature, we ask all players to pay attention to their Health Index and Friendly Index.

Do not let your fish die from negligence. Deaths in the tank may lower your fishes' desire to breed.

From top to bottom, the four bars are 'Health Index', 'Hunger Index', 'Friendly Index' and 'Growth Index'



Health Index

From red to yellow to green, representing in that order, 'life threatening', 'unhealthy', and 'healthy'



Hunger Index

From red to yellow to green, representing in that order, 'hungry', 'unsatisfactory' and 'well-fed'



Friendly Index

From red to yellow to green, representing in that order, 'no feeling', 'getting to know you' and 'loves you'. Each new member from the pet shop starts off with a friendly index of 0.



Growth Index

From red to yellow to green, representing in that order, 'fry', 'puberty', and 'matured'



Mood Icon

There are seven different icons showing their mood, from joyful to madness. Some species are naturally more aggressive than others. Unless you enjoy watching fish chase each other around in the tank, you may want to consider checking out the encyclopedia before choosing your occupants.



Browsing for Fish

To browse for the attributes of individual fish, use the up/down arrows next to the 'Mood Icon' to scroll the list. You may also click on the fish in the tank directly to capture their information.

If the selected fish is dead, you may release that fish by clicking the fish angel on the panel or use the cursor to drag the fish back to the panel.



Show Frame

If you can't figure out which fish's information is on display, just click the 'Mood Icon'. By clicking the 'Mood Icon', you will see a box framing the fish face. Now see if you can scan the tank and find the framed fish, and match that to the fish on the panel display.

To hide the box, just click on the 'Mood Icon' again.



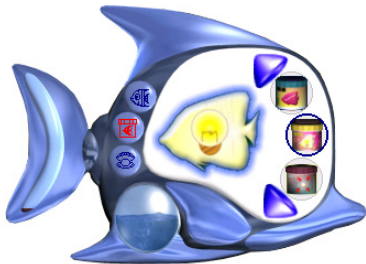
Follow

Have you noticed the 'Binoculars Icon' underneath the down arrow? Click on it to go on an exciting ride around the tank, and follow your fish around! Right mouse button to restore the normal point of view.



Fish Food & Diet

Click on the 'Food Icon' to access three types of food cans located between two scrolling arrows.



Circle any of them to check their usage shown on the left. There are seven kinds of food available.

Select from:

Normal

Blow Up

Shrink

Neon

Balloon

Madness

Pizza



These are not normal foods since they will create special effects when the fish eat them. They are entertaining for both you and your fish. However, some of them may dislike the pizza after a few bites. Perhaps, increasing their intimacy level by tickling them with finger cursor will gain back their interest in pizza. Try it out, but since pizza is not their primary food it's not the nutritious choice.



Changing the Water

The water in your tank should constantly be replenished and recycled; otherwise the tank environment will soon be polluted and toxic to all aquatic life. The tank population and food leftovers definitely influence the speed of contamination. As you can see from the curved bar located on the Fish Helper's tail, when the bar reaches above the third quarter, the occupants will feel ill and their health index will decrease. Click on the bubble on the lower left side of the Fish Helper to change the water. However, the frequent water changes may also influence those who cannot adapt to the rapid changes in environment. Feed only the adequate amount at a time and setup a maintenance schedule that will keep them happy.



Main Menu

Click the seashell on the Fish Helper to get back to the Main Menu.

PLEASE NOTE:

After feeding them well, their health index will remain for at least three hours. After that, their health index will start to drop. It takes approximately two days for them to perish from hunger. The hunger index increases as they consume any type of food. Although they do not necessary need to eat again, they however will soon start to look for food again even if the hunger index indicates that they are full already. To prevent you from spraying too much food into the tank, you can only spray approximately seven times before all the foods are eaten or vanished in the tank. The fishes may be depressed, anxious or more aggressive when they are hungry.

Marine Pet Shop

You can purchase approximately forty-eight different species from the shop. However, the in store stock has a limited quantity of each species. Marine Pet Shop only sells baby fish, that is, small, dim colored "fry." Their striking coloration and markings will become more vivid after you have raised them for a few days. It's important to fill your tank with male and female fish so that they may breed.



Trading Tropical Fish

When you enter the shop, you will notice two tanks; the small one is on the counter (left side) and the larger one is at the rear (right side). The larger aquarium belongs to the shop, and is where your fish are until you buy them. The smaller tank at left contains all the fish you own. When you click on either tank, the panel above will show the individual characteristics and data of that fish.



"BUY" Fish

Click on the large aquarium (the tank will be highlighted then,) at the right will reveal the in store fish on the "Marine Pet Store" panel. Use the scroll arrows to view the fish that are available for sale. There are usually 3-5 fish of each species provided.

Important Note: as you buy fish, you decrease the supply in the Marine Pet Shop accordingly. You can only replenish the Marine Pet Shop, when you sell your fish back. So careful, because once you use up all the fish of a species, you can't get more. As your fish become property of the Marine Pet Store, they transform back to their baby state, "fry." As certain fish "tank mates" may require slightly different conditions, so therefore choose your occupants wisely. You can click on each fish to check his or her individual characteristics and data. Once you choose your pet fish, do not forget to give your new pet a nickname. Once you are done, click on the "BUY" button to let the new member join your aquarium.



"SELL" Fish

Clicking the small aquarium on the left will highlight the "Sell" tank and let you have a final look at the fish you are about to release. The panel above shows the individual characteristics and data for the fish in the "Sell" tank. If you decide to return him or her back to the shop, just click on the "SELL" button. Please note that you will never see the fish you have sold in the future, so always double check before you click that button!

Fish Attribute Data

The panel shows the following attribute data of the selected fish:



Scientific Name & Common Name

Each species has a unique scientific name and sometimes a different common name. If our encyclopedia's brief entries don't have the information you need, you can find out more online or in your local library.

Nick Name

Name your baby fish! Just type it into the Nick Name box.

Health Index

The colors range from red to yellow to green and mean in that order, 'life threatening', 'unhealthy', and 'healthy'.

Hunger Index

The index goes from red to yellow to green, and represents in that order, 'hungry', 'unsatisfied' and 'well-fed'.

Friendly Index

Does your fish love you yet? Find out with this index. It goes from red to yellow, to green, representing in that order, 'no feelings yet', 'getting to know you' and 'loves you'. Each new member's index from the pet shop starts off at zero.

Growth Index

The index colors change as your fish grows from baby to adult from red to yellow to green, representing in that order, 'fry', 'puberty', and 'mature'.

Mood Icon

There are seven different icons showing their mood, from joyful to madness.

Gender

The gender indicator is located at the bottom right corner.

♀ Female fish

♂ Male fish.

Return to Main Menu

Click the seashell at the bottom left corner to get back to the Main Menu.

Know Your Fish

Tropical Fish Encyclopedia has information on one hundred and three different species. After you click on the "Library" icon in the Main Menu, you will be led to an encyclopedia on a desk. Click on the cover to flip to the index page which has each species categorized by their family. We use the fish that can best represent its family as the icon for you to click on.



If you want to see more species of certain family, use the magnify glass cursor to highlight the icon and the book will flip to the page which has information on the first species of that family. You can click the right page to see the next species or click the left page to flip to another family. If you want to return to the index page, use the right mouse button, or simply click on the index tag.

To return to the Main Menu, use the seashell icon located at the upper left corner.



Helpful Terms

Territorial

This type of fish is not suitable to be captive with other species. They may harass other fish or be frightened easily by others.

Shoal

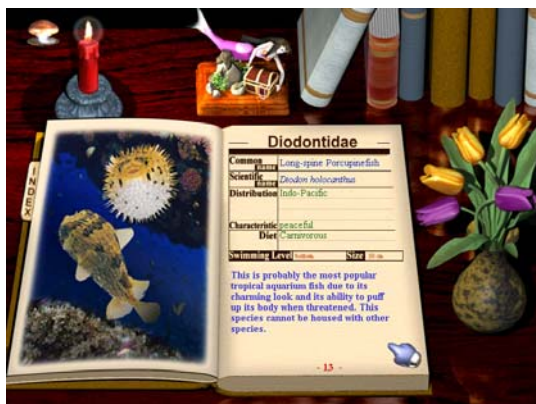
The fry of most species will be stressed without the psychological security of the shoal. Shoaling species form a group to defend themselves from predators. Watching them swim together is quite delightful.

Omnivore

Eats both plants and animals.

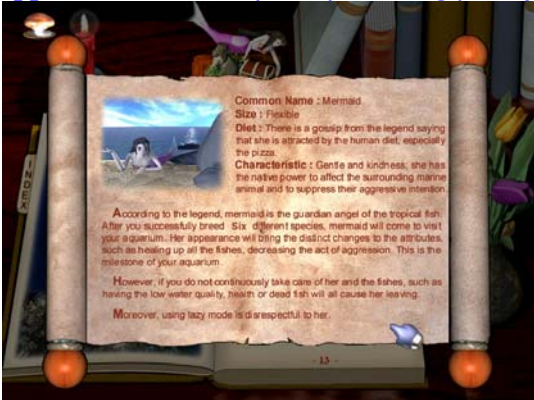
Sedentary

Usually occupies a favored cave, crevice or gravel.



For the longest time, there have been rumors about the existence of mermaids. A mermaid is not only a half-man, half-fish creature, but is also a guardian of the sea. As you bring your fish home, one by one from the pet shop, feeding them three meals a day, taking care of their basic needs and playing with them. You will find that your tireless efforts have not gone to waste as your treasured pets grow up and create a

family of their own. Grateful for your loving care, your tropical fish may transmit the news of your warm hospitality to the mermaid in the sea. Perhaps one day, she will appear and reward you by turning your fish tank into a dream like paradise.

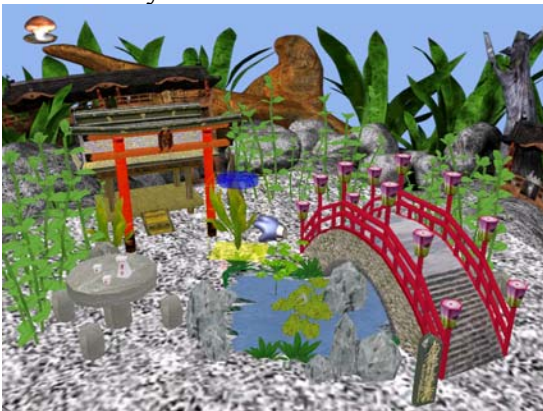


If you wish to learn more about mermaids, you may wish to read up on them in the by clicking the treasure chest on the bookend.

Decorate Your Aquarium Fulfill Your Dream

Your aquarium is like a stage with your pet fish as the star actors! Decorate your tank to suit your personality but also remember it's got to be comfortable and entertaining for your fish too.

We will call everything you put in the tank an item. Setting up and stocking a gorgeous aquarium is very rewarding. When you enter here, you will notice a panel at the center of screen. There are two lists on the panel; the upper lists how the items category and the lower list provide all the selections of each category. The two arrows aside the lower list allows you to scroll the items. Don't limit yourself, let your imagination create the possibility of countless unique aquariums, but never forget to leave enough space for its occupants, as it is their entire world. You can always come here to construct a new tank, or to modify old tanks.



Categories of Items



from left to right

**1.Background 2.Architecture 3.Associates 4.Plants
5.Rock 6.Coral 7.Anemone 8.Wood**

Once you use left mouse button to select the category, the panel will reveal three items of each category at the bottom.

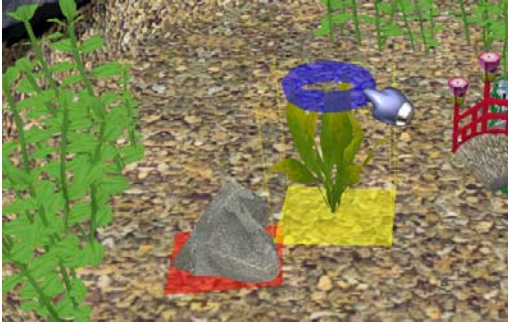
Selecting Items

To select items, first you need to open the Items Category panel by clicking the right mouse button. When you pick one of the categories, you can scroll through the choices using the arrow buttons at left and right.

Highlight the item with the cursor and left-click. The panel will close now and the item you have chosen will show up at the center of the tank. If you do not see the item, it might be concealed among other items. However, you will notice a framed box sitting on the yellow region with a blue ring floating above. Those are the three marks that help you all locate the item. If the new selected item is overlapped with other items, the yellow region will change its color to red. The box is for you to realize its size and the blue ring allows you to rotate the item.

Placing Items

Once you have selected the item, move the cursor inside the colored region and hold down the left-mouse button to drag it to the desired location. As the tank acquires more items, it may not be easy to pick them up. Now you can rotate around by moving the cursor to the edge of the screen to obtain better a viewpoint. Please note that is perfectly fine to have items overlap each other to fulfill your unique creation.



Rotating Items

To rotate the item, just move the cursor to the blue ring (notice that the cursor will change to a hand pointing at the item). Hold down the left mouse button to swing the item.



Changing Scale

To change its scale, simply press the [+] or [-] button on the keyboard. Pressing [+] will increase the size, while pressing [-] will shrink the item.



PLEASE NOTE

If it is rather difficult to place the item at the edge of the tank, try using [Page Up] and [Page Down] key to zoom in and zoom out respectively. If that still does not work, you might be placing the item out of the bounds.

Aquarium Management

After decorating a splendid aquarium, you must be eager to add fish. But you may want to save it on your system first. Click on the seashell at the left hand corner to open the Aquarium Manager panel.

*There are **five** options, please refer to their functionalities as the followings.*

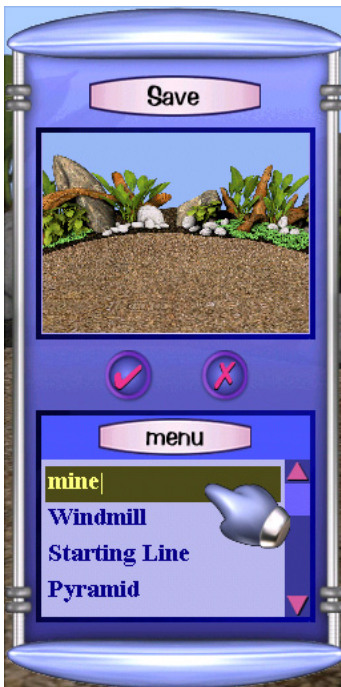


New Aquarium

Clicking "Construct" will remove all items from the tank and allow you set up a new tank from scratch.

Save Aquarium

Once you click "Save", the panel will show a small captured image of the current aquarium at the top. At the bottom there is a list of existing aquariums. If you want to save it as a new aquarium, type in a new name on the empty slot. If you would like to replace the existing aquarium, select it from the list and click the 'check' button. By doing so will permanently remove the old data. To cancel and return to the Manager panel, click on the 'cross' button and no saving action would take place.



Load Aquarium

"Load" will show up a screen similar to the saving panel. You will see a file list containing the names of existing aquariums. Select one of them to review its captured image. Again, use the 'check' button to load it into the scene.



Return to Decorate Menu

Click "Back" to get back to Decorate Menu

Return to Main Menu

Click "Main Menu" to get back to Main Menu

In-Game Options

From the Options screen, you may modify the following system options:

Sound, Music, Music Play Mode, Video, and Game Play Mode.





Sound

The



adjusts the over all volume of the in-game sound effects.

Music

The  and  adjusts the music volume independently.

Music Play Mode

Random Mode

You can choose this mode to let My Sim Aquarium playing the sound effect or background music randomly.

Select Mode

If you want My Sim Aquarium to play your favorite sound effect or background music, then you need to use this mode.

Video

There are three options, '640X480', '800X600' and '1024X768'. The default setting is '640X480'. We recommend using '640X480' or '800X600' for 15" monitor and '1024X768' for 17" monitor.

Game Play Mode

Lazy Mode

The relaxing, facilitated playing mode, which uses the auto-feeding system, can take care of the fish for you. However, the fish will neither grow, nor breed under this mode.

Expert Mode

With expert mode, fish will grow under your careful supervision, and daily feeding. Be aware that the fish maybe starving or could even die if you system is shut down.

Make My Sim Aquarium your Screen Saver

From your start menu, click on settings and open your control panel. From there, click on display and click on screensaver. Choose **My Sim Aquarium** from the screensaver drop down menu, and then click OK.

Credits

My Sim Aquarium

Executive Producer: Nan-Hung Kuo

Development Director: Gordon Kuo

3D/VR Programmers: Senyang Huang, Gordon Kuo, Ho-Yun Liu

Programmers: Ho-Yun Liu, Gordon Kuo, Senyang Huang, David Lor

Product Design: Gordon Kuo, Senyang Huang, Ho-Yun Liu, Starwing Kao, Percy Teng, Minsex Lin, Phyllis Liu, David Lor

3D Animator: Percy Teng

3D Scene Artists: Percy Teng, Minsex Lin

3D Model Artists: Percy Teng, Minsex Lin

GUI Design: Minsex Lin, David Lor, Phyllis Liu, Starwing Kao

Homepage Design: Jian-Hung Chen, Phyllis Liu

Visual Design: Phyllis Liu, Vinnie Chiu, Shihlin Wang

Sound & Music: Phyllis Liu, Gordon Kuo

Manual Design: Starwing Kao, Percy Teng

Encyclopedia Design: Starwing Kao, Phyllis Liu

Ad. Design: Minsex Lin, Vinnie Chiu,

Ad. Editors: Phyllis Liu, Gordon Kuo, Starwing Kao, Minsex Lin
Product Testers: Nan-Hung Kuo, Anita Chou, Chia-Shiu Guw, Gordon Kuo,
Senyang Huang, Ho-Yun Liu, Starwing Kao, Percy Teng,
Minsex Lin, Phyllis Liu, David Lor, Jian-Hung Chen, Vinnie
Chiu, Jenny Chen, Sandy Chung, Micki Sun, Tina Huang, Yan-
Heng Chen,

Special Thanks To:

Taiwan Fisheries Research Institute-Keelung Headquarter
Taiwan Fisheries Research Institute-Penghu Aquarium
For Tropical Fish Information and Advice.

Hot key List

My Sim Aquarium offers many optional control short cuts that you can access with a simple key stroke or combined keys.

Applies To All Windows

[ESC] *Quit to Main Menu*
[CTRL]+S *Show refreshing rate (FPS: frame per second)*
[CTRL]+V *Show game Version*

My Aquarium and Decorate Aquarium: View Control

↑ (or move cursor to the top of screen) rotate upward
↓ (or move cursor to the bottom of screen) rotate downward
← (or move cursor to the left of screen) rotate to left
→ (or move cursor to the right of screen) rotate to right
[Page Up] zoom in
[Page Dn] zoom out

My Aquarium

Right Mouse Button *back to previous screen*
[F5] *increase light intensity*
[F6] *decrease light intensity*
[F9] *switch of translucent shadow*
(number key) 1 *small Fish Helper*
(number key) 2 *medium Fish Helper*
(number key) 3 *big Fish Helper*

Marine Pet Shop

[Tab] switch focus between My Tank and Pet Shop's Tank
[Del] buy or sell fish
[↑] select previous fish from My Tank or the previous species from Pet Shop's Tank
[↓] Select next fish from My Tank or the next species from Pet Shop's Tank

[←] Select the next fish from Pet Shop's Tank

[→] Select the previous fish from Pet Shop's Tank

Decorate Aquarium

[CTRL] + hold down left mouse button duplicate item

[ALT] + hold down left mouse button and drag up blow up item or [+] blow up item

[ALT] + hold down left mouse button and drag down shrink item or [-] shrink item

[Del] remove item [Tab] select next item [Shift]+[Tab] select previous item Click right mouse button open / close item category or [Enter] open / close item category.

Support

Do you need help? For technical support email mail@viva-media.com or visit our website at www.viva-media.com.

Have Fun!

